

## Mounting Brackets, Boxes & Transformers

Mounting brackets, 100V line transformers & single gang boxes for VC volume controls

# MOUNTING HARDWARE

### MB1 wall mount bracket

MB1 mounting bracket for COM SLIM loudspeakers ▶

Product Name	Wall mount bracket for COM SLIM loudspeaker
Model	MB1
Dimensions	82 mm x 82 mm x 100 mm
Mounting hole diameter	Ø6 mm
Material	Steel
Weight	0,2 kg
Colour	White (RAL 9016)



### MB6 Cluster Assemblies

MB6 - Mounting assemblies for 6 pieces

VIVA3 302 / VIVA3 502 speakers hung from ceilings ▼



Product Name	Cluster Assembly	Cluster Assembly
Model	MB6 for VIVA3 302 Cluster Mount	MB6 for VIVA3 502 Cluster Mount
Dimensions	Ø365 mm x 110 mm	Ø485 mm x 117 mm
Mounting hole diameter	Ø10 mm	Ø10 mm
Material	Steel	Steel
Weight	2,5 kg	3,10 kg
Colour	White (RAL 9016)	White (RAL 9016)

### pBOX Plastic Box for Volume Control Units

pBox - plastic surface mount box for VC and WC iMIX volume control units ▼

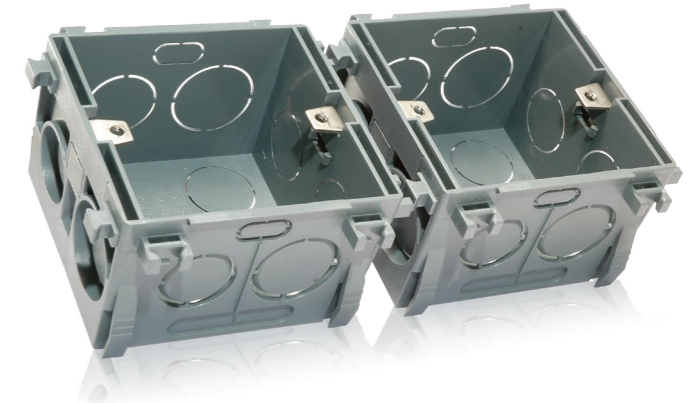
Product Name	mBox
Material	Plastic
External dimensions	85 mm x 50 mm x 85 mm
Internal dimensions	80 mm x 47 mm x 80 mm
Weight	109 g
Colour	White (RAL 9016)
Mounting type	Surface mount



### iBox Single Gang Box for Volume Control Units

iBox single gang box for VC and WC iMIX volume control flush mount ▶

Product Name	iBox
Material	Plastic
External Dimensions	80 mm x 78 mm x 52 mm
Internal Dimensions	68 mm x 70 mm x 50 mm
Weight	60 g
Colour	Black (RAL9017)
Mounting type	Flush mount



### 100 V Line Transformers

Transformers for 100 V speaker lines with secondary winding for 8Ω speakers.

Speaker line maximum load - 10W, 20W, 30W, 50W ▼

Technical Specifications	TR-10	TR-20	TR-30	TR-50
Power	10W	20W	30W	50W
Transformer power taps	10 W - 5 W - 2,5 W - 1,25 W	20 W - 10 W - 5 W - 2,5 W	30W	50W
Load for secondary winding	8Ω	8Ω	8Ω	8Ω
Weight	0,3 kg	0,3 kg	0,3 kg	0,6 kg
Dimensions	50 mm x 43 mm x 40 mm	50 mm x 43 mm x 43 mm	50 mm x 43 mm x 41 mm	60 mm x 50 mm x 52 mm
Cable length	200 m	200 mm	190 mm	200 mm

